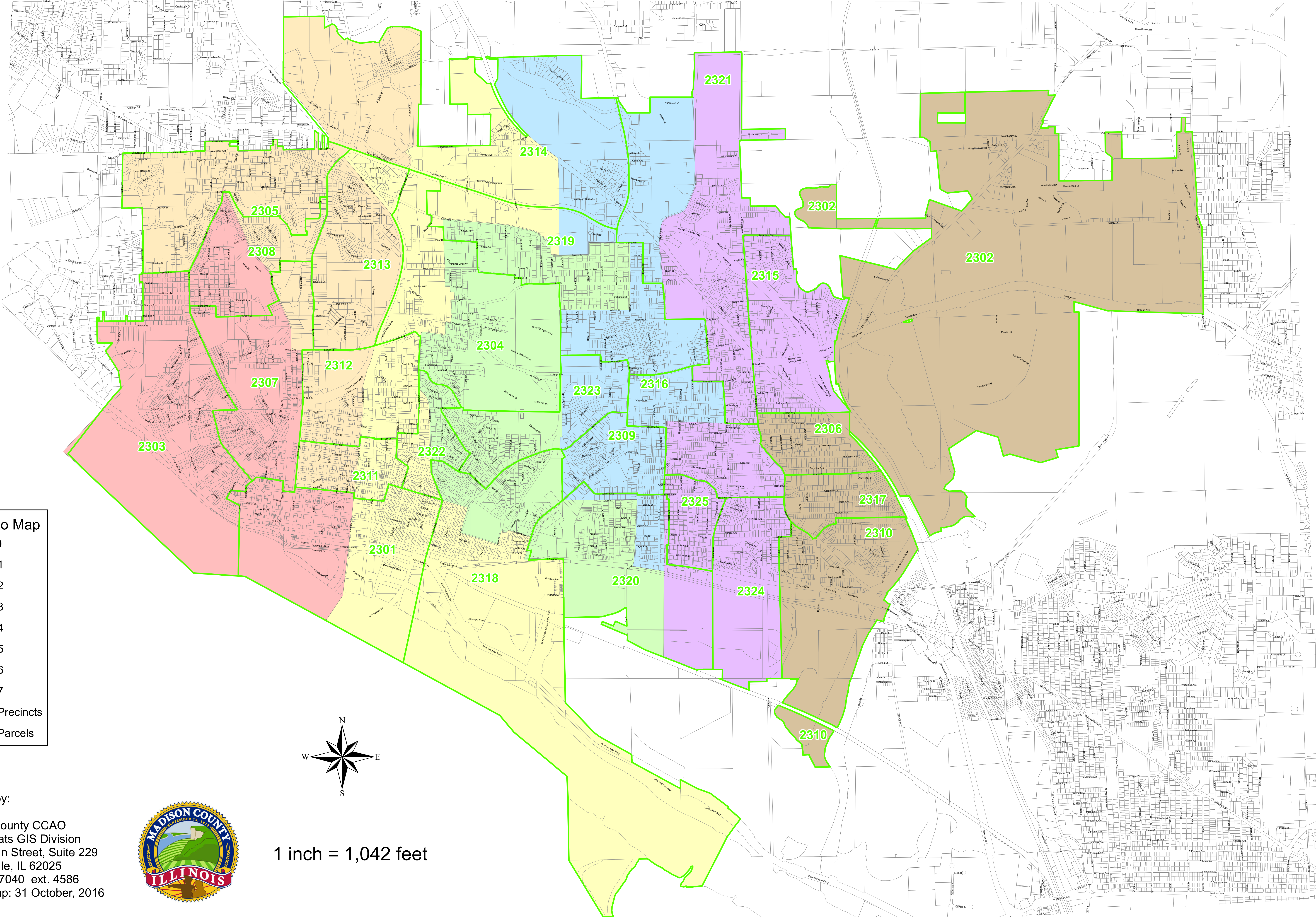


Alton Precincts & Wards

Madison County, IL



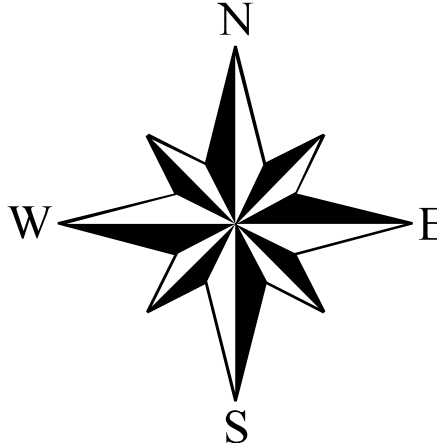
Key to Map

WARD

- 1 (Pink)
- 2 (Light Orange)
- 3 (Light Yellow)
- 4 (Light Green)
- 5 (Light Blue)
- 6 (Purple)
- 7 (Brown)

Green outline: Precincts

White outline: Parcels



1 inch = 1,042 feet

prepared by:
Madison County CCAO
Maps & Plats GIS Division
157 N. Main Street, Suite 229
Edwardsville, IL 62025
(618) 692-7040 ext. 4586
Date of Map: 31 October, 2016

